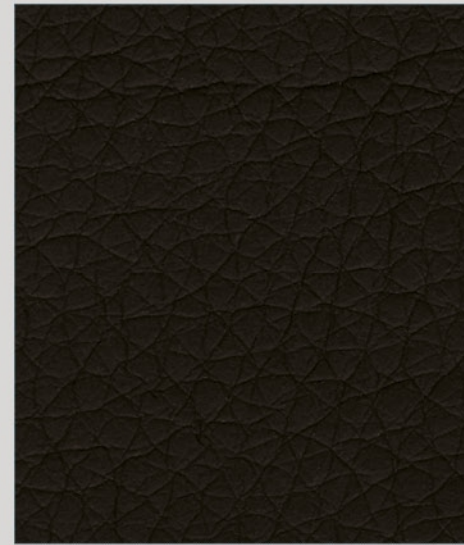


# BULL

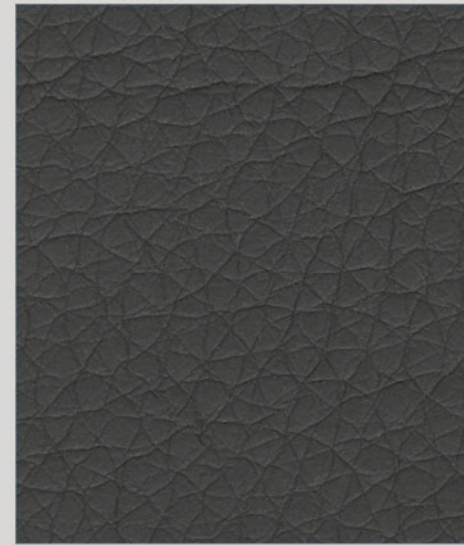
VERA PELLE



#Bull - 100 NERO



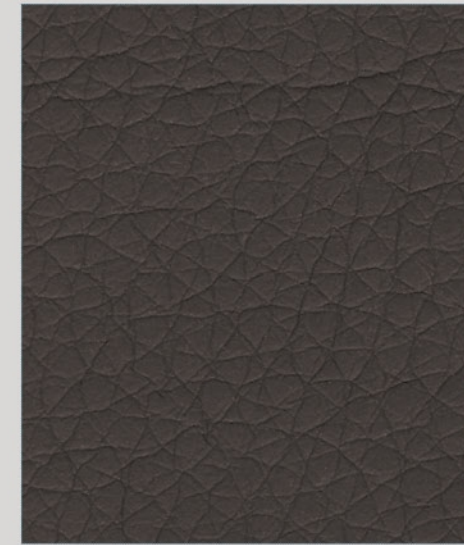
#Bull - 327 GRIGIO SCURO



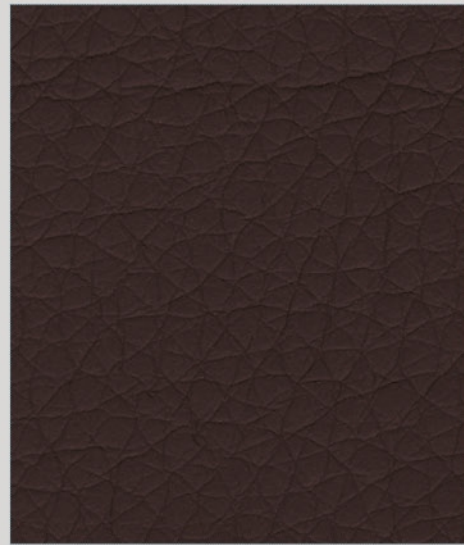
#Bull - 329 GRIGIO



#Bull - 352 FANGO



#Bull - 359 VISIONE



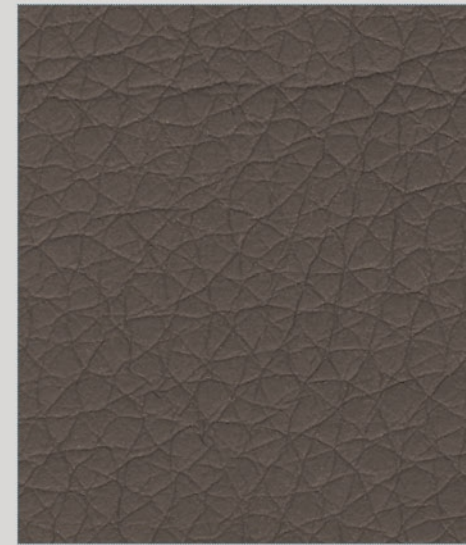
#Bull - 115 MARRONE



#Bull - 326 ESPRESSO



#Bull - 328 TORTORA



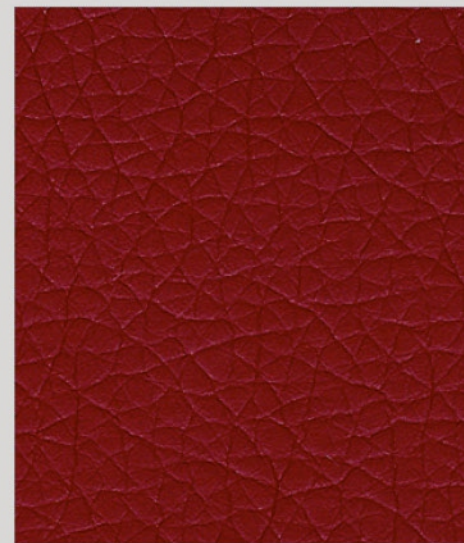
#Bull - 312 TAUPE



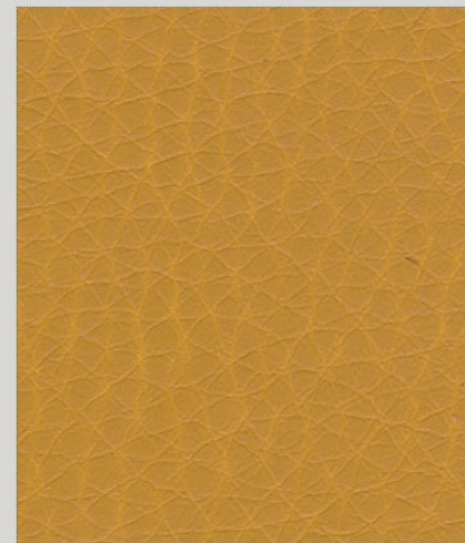
#Bull - 358 BISCOTTO

Il colore delle pelli può leggermente variare in base alla fornitura

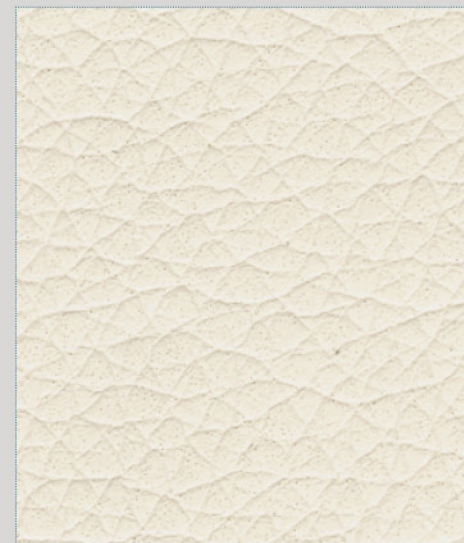
The color of the leathers may vary slightly depending on the supply



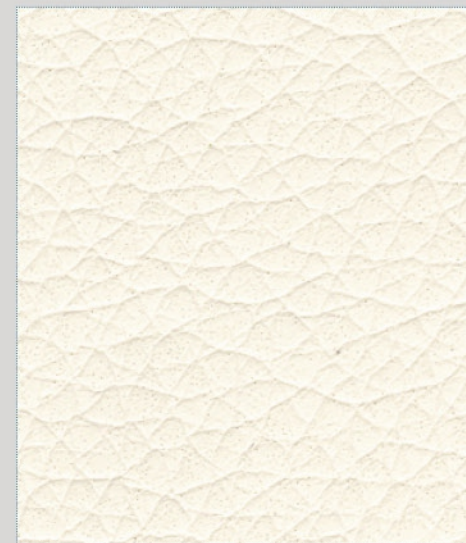
#Bull - 150 ROSSO CARMINIO



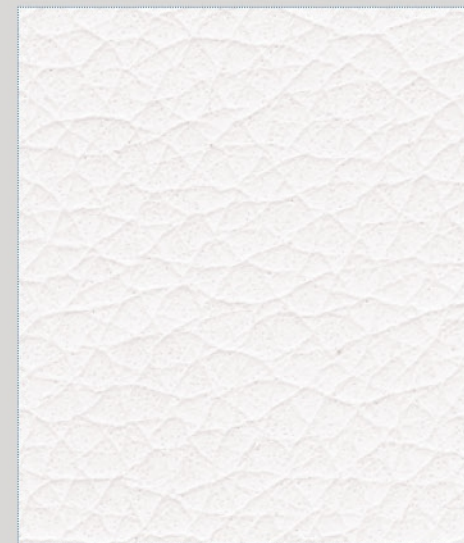
#Bull - 355 SENAPE



#Bull - 93 BIANCO LATTE



#Bull - 101 BIANCO NATURALE



#Bull - 370 BIANCO PURO

## BULL / VERA PELLE

### CAT. 1500

E' una pelle smerigliata, pigmentata e stampata. Spessore 1,3 - 1,5 mm. Aspetto opaco in tinta unita, ha una gradevole morbidezza ed al tatto dà una sensazione di "pieno" conferita dallo spessore. La presenza di segni quali cicatrici rimarginate, differenza di grana, rughe, tonalità, venature, sono la prova della sua assoluta genuinità.

#### Consigli per la pulizia

Per la pulizia di routine utilizzare un panno asciutto o appena umido. In caso di macchie, usare acqua distillata e sapone neutro.

Si raccomanda di lasciarla asciugare naturalmente, e di evitare l'utilizzo di fonti di calore artificiali.

#### REAL LEATHER - BULL

Emery leather, pigmented and printed. Thickness 1.3 - 1.5 mm. The carefully chosen leather is treated with a light grinding process on the surface. All the treatments help to preserve leather's exceptional natural characteristics, including certain anomalies due to the free range raising of the animals, such as scars, slight grazing, insect bites etc. These anomalies are visible proof of a natural product. The skin of this category is characterized by a matt grained, slightly in relief, a very soft hand, to the touch gives a feeling of "full" conferred by the thickness.

#### Cleaning tips

For everyday cleaning a wet cloth can be used without rubbing. In case of stains, use distilled water and mild soap.

It is recommended to let it dry naturally, and avoid the use of artificial heat sources.

spazi@relax